

“One Unit, many possibilities and made “On-Spec”

Hoopman Equipment & Engineering BV, based on years of practical experience, has developed and sold various liquid matrix treatment systems.



They are now available in a large variation of modules and sizes and can handle simple standard or complex bespoke seed company protocols for

- Seed Priming
- Seed Disinfection
- Liquid Density Separation.

Seed Priming

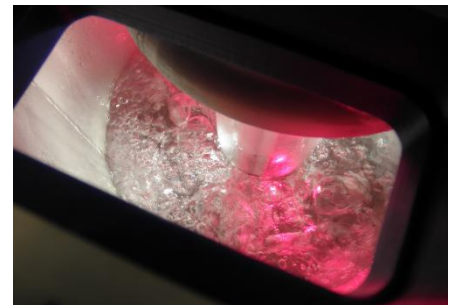
Liquid matrix priming is very common practice for many seed priming protocols, particularly for small to medium batch/lot sizes. Seeds can be primed in water + additional components for osmotic potential control + dormancy breaking substances etc.

Seed Disinfection

Liquid matrix disinfection is also a very common practice and part of many seed disinfection protocols such as the (approx.) 45 minutes (approx.) 45 °C ISTA hot water treatment. In our modular liquid matrix seed treatment unit(s) also seed disinfectants such as chlorine can be added. Also 'Thiram steeping/soaking' protocols can be performed consistently.

Liquid Density Separation.

During many of the above protocols separation of floating/sinking seed is relevant. Our systems can be supplied with decanting and/or draining systems to perform such separation exercises consistently and according to GLP standards also taking labour (safety) conditions in mind.



Priming Units



Our system makes sure that a multitude of protocols can be executed with the following concerns in mind.

- Available in various 'modules' and various sizes including a laboratory set up.
- Absolute hygiene because of HACCP/GLP style design.
- No batch/lot cross contamination because 100% self-contained.
- Absolute protocol consistency if required controlled by PLC
- Optional PC for monitoring/tracking protocols.
- "Configurable" to your needs, light / temperature curves etc.
- Can be mechanised and automated to also accommodate large seed lot handling.



High-Tech, for complex protocols with sophisticated ERP seed lot specific protocol communication



Hygiene... HACCP equivalent engineering



High volume/throughput & mechanic seed supply